

# BUG IDENTIFICATION CENTER

2229 TAYLOR RD. CAYCE, SOUTH CAROLINA 29033 803.796.5588 WWW.CAYCEBUGS.COM

Use this handy reference guide to determine what's bugging you!  
 Don't see your bug pictured here? Call us today! *We know bugs!*

## HOUSEHOLD PESTS



**AMERICAN COCKROACH**  
 Reddish to dark brown,  
 1 $\frac{3}{8}$  to 2 $\frac{1}{8}$  inches,  
 commonly called  
 "waterbugs."

Clemson Univ./USDA CES, insectimages.org



**GERMAN COCKROACH**  
 Light brown to tan,  $\frac{1}{2}$  to  $\frac{5}{8}$   
 inch, common in kitchens  
 and baths.

Clemson Univ./USDA CES, insectimages.org



**ORIENTAL COCKROACH**  
 Shiny black to dark reddish  
 brown, 1 to 1  $\frac{1}{4}$  inch,  
 commonly called "sewer  
 roach."

Clemson Univ./USDA CES, insectimages.org



**SILVERFISH**  
 Silvery to gun metal,  
 $\frac{1}{2}$  to  $\frac{3}{4}$  inch, normally  
 hid during the day and  
 can infest any area of  
 structure.

Clemson Univ./USDA CES / insectimages.org



**EARWIG**  
 Pale brown, reddish brown  
 or black,  $\frac{1}{4}$  to 1 inch, active  
 at night, hide in moist  
 shady areas.

Merle Shepard, Gerald R. Carner, P.A.C Ooi / insectimages.org



**MILLIPEDE**  
 Blackish, brownish or  
 red/orange, active at night  
 and seek areas of high  
 moisture.

Gary Alpert, Harvard Univ. / insectimages.com



**AMERICAN HOUSE SPIDER**

Joseph Berger / insectimages.org



**PILLBUG**  
 Slate grey,  $\frac{1}{4}$  to  $\frac{5}{8}$  inch,  
 commonly called "roly-  
 polies."

Gary Alpert, Harvard Univ / insectimages.org



**SAWTOOTHED GRAIN  
 BEETLE**  
 Brown,  $\frac{1}{8}$  inch, found in  
 cereals, bread, nuts, dried  
 fruits, and many other  
 products.

Clemson Univ./USDA CES, insectimages.org

# BITERS AND STINGERS



Gary Alpert, Harvard Univ / insectimages.org

## BEDBUG

Red to reddish brown,  $\frac{3}{16}$  inch, harbor in cracks and crevices and feed at night, found in mattress, box springs, furniture, light switches, etc. One of the fastest growing pest problems in this country.



Clemson Univ./USDA CES / insectimages.org

## COMMON STRIPED SCORPION

Yellowish brown to tan, 2  $\frac{1}{4}$  - 2  $\frac{1}{2}$  inches, sting comparable to a wasp or bee sting.



Joseph Berger / insectimages.org

## FLEA

Brownish black to black,  $\frac{1}{8}$  inch, jumping insects, blood feeders that may transmit disease.



Gary Alpert, Harvard Univ. / insectimages.org

## BROWN DOG TICK

Reddish brown, grey-blue or olive when engorged, can transmit disease.



Susan Ellis / insectimages.org

## ASIAN TIGER MOSQUITO

Dark brown to black, carriers of many diseases and heartworms.



DPI-Archive, Florida DACS / insectimages.org

## BROWN RECLUSE SPIDER

Tan to dark brown with a darker fiddle shaped marking on dorsum (top behind eyes). Inside, normally found in undisturbed areas such as boxes, shoes and below tables. Bites to humans can be dangerous.



Clemson Univ./USDA CES / insectimages.org

## BLACK WIDOW SPIDER

Typically black with reddish hourglass marking on abdomen. Inside, normally found in seldom unused areas of garage, basements, and crawlspaces. Bites to humans can be dangerous, especially to small children.



Gary Alpert, Harvard Univ. / insectimages.org

## PAPER WASP

Brownish with yellow or reddish markings,  $\frac{5}{8}$  -  $\frac{3}{4}$  inch long, normally building a comb nest in any protected location.



Gary Alpert, Harvard Univ. / insectimages.org

## EASTERN YELLOW JACKET

Yellow and black,  $\frac{3}{8}$  -  $\frac{5}{8}$  inch, mostly ground nesting but may build an aerial nest in shrubs or on buildings.



Whitney Cranshaw, CSU / insectimages.org

## HONEY BEE

Orangish brown to black with body covered with pale hairs,  $\frac{1}{2}$  -  $\frac{5}{8}$  inch, are not aggressive and will attack only when colony is threatened. Live removal is preferred but not always an option.

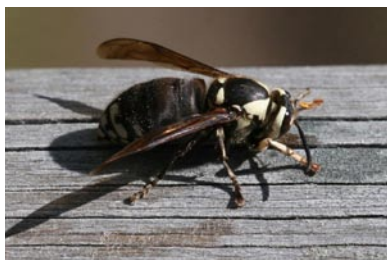
## BITERS AND STINGERS



RITA Parkins / insectimages.org

### BALDFACED HORNET NEST

Built of chewed cellulose material, can be constructed in trees, shrubs and on buildings, up to 14 inches in diameter and over 24 inches in length.



Johnny N. Dell / insectimages.org

### BALDFACED HORNET

Black with white pattern on most of face,  $\frac{5}{8}$  –  $\frac{3}{4}$ + inch.



Kristina Simms / insectimages.org

### BUMBLE BEE

Black with yellow markings,  $\frac{1}{4}$  – 1 inch, beneficial insects due to pollination of many plant species.

## ANTS



UGA-Archive / insectimages.org

### FIRE ANT MOUND

Normally built under stones, at the base of a tree, shrub or any undisturbed area.



Johnny N. Dell / insectimages.org

### FIRE ANTS

Head and thorax yellowish red and abdomen black, workers average  $\frac{1}{16}$  –  $\frac{1}{4}$  inch, inflict painful bites.



Natasha Wright, Florida DACS / insectimages.org

### ARGENTINE ANT

Light to dark brown,  $\frac{1}{16}$  inch long, inside usually nest near a moisture source such as sinks, potted plants, etc.



Susan Ellis / insectimages.com

### ODOROUS HOUSE ANT

Dark brown to black,  $\frac{1}{16}$  –  $\frac{1}{8}$  inch, prefer wall voids especially around hot water pipes and heaters, in crevices around sinks, etc.

# WOOD DESTROYING INSECTS



Gary Alpert, Harvard Univ. / insectimages.org

## SUBTERRANEAN TERMITE WORKER

Off white to almond color, 1/8 – 1/4 inch, does all of the work and damage for a colony.



Gary Alpert, Harvard Univ. / insectimages.org

## SUBTERRANEAN TERMITE SWARMER

Black with 2 pair of wings, 2 body segments, about 3/8 inch long, with straight antenna, normally swarm in spring.



USDA Forest Service Archive / insectimages.org

## SUBTERRANEAN TERMITE SHELTER TUBE

Mud tubes that act as "highways" between the colony and food sources.



Clemson Univ. / USDA CES / insectimages.org

## OLD HOUSE BORER

(mature larvae)  
White, about 1 1/4 inch, can live in wood 12 to 15 years, evidence of activity includes oval ragged emergence holes, frass (fine sawdust), and "clicking" noise.



Whitney Cranshaw, CSU / insectimages.org

## POWDER POST BEETLE SYMPTOMS

Small emergence holes and streaming frass (fine sawdust) are signs of an active infestation.



Clemson Univ. / USDA CES / insectimages.org

## CARPENTER ANTS

Black, red/black, red, or brown. Various sizes normally infest decayed wood and expand into sound wood.



Whitney Cranshaw, CSU / insectimages.org

## CARPENTER ANTS WITH WINGS

Normally swarm from May until August.



Johnny N. Dell, insectimages.org

## CARPENTER BEE

Resembles bumble bee except abdomen is black and shiny, about 1 inch long, normally bore holes in weathered and unpainted wood to lay an egg.

---

## CAYCE EXTERMINATING CO., INC. OFFERS

- Mosquito Management
- Fire Ant Control
- Termite Control
- Moisture Control
- Crawlspace Insulation
- Bathroom Repairs
- Floor Repair
- Termite Pre-Treatments
- CL-100 Termite Letters
- Pest and Rodent Control
- Termite Damage Repair
- Water Damage Repair
- Guttering
- French Drains

Call 803.796.5588 or visit [www.caycebugs.com](http://www.caycebugs.com)

*"Your Satisfaction is Our Future"*

---